



ST. ALBAN'S
CATHOLIC PRIMARY SCHOOL
LEAD THE WAY

Yr 5 Geography: Map Reading



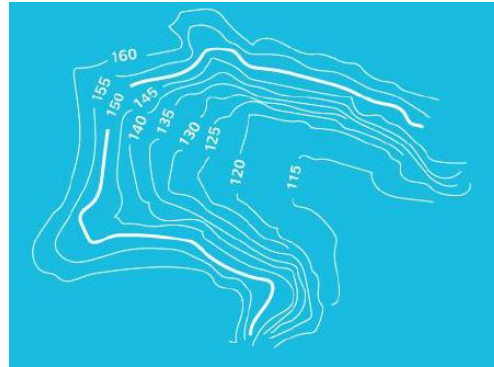
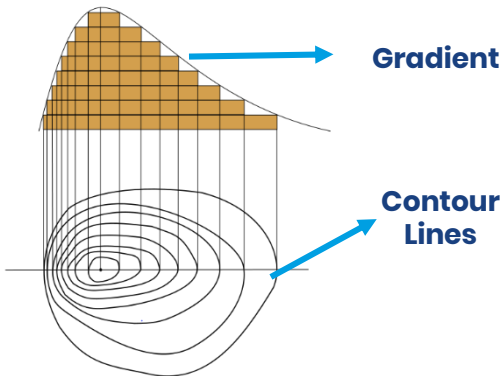
Contour Lines

Height is shown on Ordnance Survey maps using contour lines. These lines show the shape of the land.

The closer together contour lines are, the steeper the slope of the land.

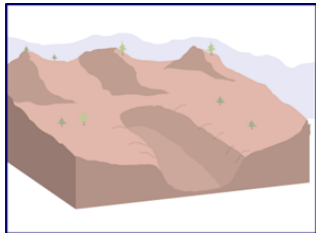
Contour lines join together places of equal height and show the shape, height or 'relief' of the land.

Contour lines only appear on a map and could not be seen in real life

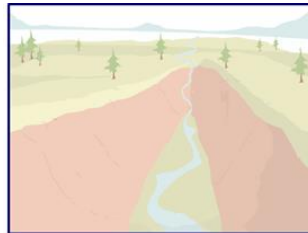


'Naismith's rule'

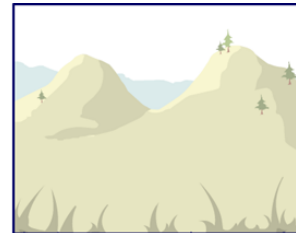
When you're travelling across steep landscapes (where contour lines are very close together) it will add time onto your journey.



U- Shaped Valley



V- Shaped Valley



Saddleback hills



Cliff

Human Features vs. Physical Features

A human feature of the environment is built and man-made, whereas **a physical feature** is a natural feature of the environment.

Physical and human features are represented using a range of symbols on maps, and also a map key.

Map Symbols

	Railway Station		Multiple Track
	Level Crossing		Single Track
	Motorway		Road Over
	Trunk/Main Road		Road Under
	Footpath		
	Bridgeway		
	National Trail		

Ordnance Survey (OS) is the national mapping agency for Great Britain.